

# WOMEN

of the  
Evangelical Lutheran  
Church in America,  
Nebraska Synodical  
Women's Organization



# Expressions

VOL 22, NO. 4 NOVEMBER 2008

## My Place in Mission

An account of lives touched by Mission Field Nebraska and how individual church members can participate will be the focus of the 2009 Winter Retreat on Jan. 27 at St. Paul Lutheran Church, Grand Island.

It is entitled "My Place in Mission Field Nebraska." Theme Bible verse is Mark 9:37-38 NRSV: *Then he said to his disciples, "The harvest is plentiful, but the laborers are few. Therefore ask the Lord of the harvest to send out laborers into his harvest."*

Speakers will be Ruth Heinrichs, president and CEO of Lutheran Family

Services of Nebraska; Sue Stover, Associate in Ministry who is Nebraska Synod spokesperson for The Book of Faith Initiative; Roger Sasse, coordinator of the Nebraska Campaign for Leadership and Youth ("Feed the Roots, Grow the Forest"), and Pastor Tom Wilson of UNK Campus Lutheran.

The event offering will support the "Feed the Roots, Grow the Forest" campaign.

Hours are from 9 a.m. to 3 p.m. Registration fee of \$18, which includes lunch, should be sent to Nancy Johnson, treasurer, 12777 A Street, Omaha NE 68134 by Jan. 8.



*Faustine demonstrates how women in Tanzania carry things on their heads to free their hands for other work.*

### Inside . . .

Devotions . . . . .	2
President . . . . .	3
Companion	
Synods...4, 5, 6, 7	
Global	
Awareness . . . . .	8
Community:	
Action . . . . .	9
Book Talk . . . . .	10
Saved To	
Serve . . . . .	11

## Save Sept. 25-27 For NSWO Conv.

The 2009 Convention Team has been meeting for the last couple of months, and plans are coming together.

Mark your calendars now to attend "Be Still and Feel Christ's Heart Within You," Sept. 25-27, 2009.

There will be no change in the registration fee. It remains \$85 for early and \$100 for late registrations for the (Continued on page 9)

## Sisters Star at Renewals

That we are all sisters in Christ, with many of the same joys and problems, was the conclusion across Nebraska as women from Tanzania and Argentina Lutheran churches intermingled with Nebraska Women of the ELCA.

More than 500 Nebraska Lutherans met the visitors while they were here in September. About 240 attended (Continued on page 6)

# *A Devotional Study*

**By Carolyn Schlake  
Board Representative  
Southeast Conference**

*"Let us come before His presence with Thanksgiving  
and make a joyful noise unto him with psalms."*

As the Thanksgiving season is fast approaching, it is time once again to take time from our busy schedule of work and other special activities to lift our hearts in prayers of thanksgiving to God, who has given us the opportunity to live in a land of freedom and plenty.

Though we may be grateful on a day set aside when we can join others in counting our blessings and thanking God for all we have and for the country we live in (in spite of all the shortcomings), there is more for us to do. We are challenged to make every day a Thanksgiving Day through sharing of all that we have for all mankind.

On Thanksgiving, we are especially thankful for the harvest that has been gathered in. Let us take a moment to think of the harvest in terms of our spiritual lives -- the sowing and reaping of daily living. Will we have a good harvest? Will we rejoice in what we have done or will we be hanging our heads and have excuses? What will we be taking into the store house? Will the quality be good or will there be weeds in it?

Did I sow a generous amount of neighborliness and friendship? Did I sow seeds of sympathy to one in sorrow, or take time to cheer up someone who was lonely? Have I sown seeds of brotherly love by the way I spoke and acted each day? Have I sown seeds of gratitude for life's treasures -- for love of family, for home, for food, for the warmth of friendship, for the church. . . the list could go on and on.

What we reap will depend on what amount we sow. If you don't put much into living, you will not reap much. There are many bargain hunters trying to raise a bumper crop, but using inferior seed and short changing on the cultivation. We must put in our lives, our talents, our time, our personalities and our service. "Give and it shall be given to you."

The thoughts we send out bring back their own kind; the deeds we do work for or against us. Everything depends on what we plant. What will our harvest be? Was the seed good, did we plant enough, and did we share our harvest?

This Thanksgiving, let us look at what we have sown, how we have cultivated, and also look at all the beauty and abundance that God has showered on us. Let us "praise the Lord with gladness and thanksgiving" and come to him rejoicing, "bringing in the sheaves" from our harvest.

***Dear God, we ask you to help us sow and cultivate the seeds that we have sown. Fill our hearts with love and compassion, that we may share with others. We lift our hearts to you in thankfulness for all the blessings you have given us, even though we don't deserve them. Especially, let us always remember the greatest gift of all, your own dear Son. Amen.***

## A Message from the President

My heart is so full of gratitude to so many people that just saying thank you does not seem adequate. The Autumn Renewals and the trip around Nebraska with our companion sisters went so that, and that is because of the Nebraska women who were in charge of making all the arrangements.

The first person I want to thank is Pearl Anderson. Without her careful planning and countless hours of emailing our companion synods to make arrangements for our companion sisters to travel, the Autumn renewals would have had a totally different content. Her precise instructions of what we wanted included in their presentations helped all of them to prepare excellent material. Pearl's plans for the trip were very detailed. The help of so many women in the various towns that we visited made the trip very pleasant and we are able to stay close to our schedule.

Barb Becker would be next on the list of women to thank. She made the coimunication with our Spanish-speaking sisters possible and did an excellent job of translating in many situations. She always made sure that everyone knew what was scheduled and the time everyone had to be prepared to board the vehicle for departure.

I will not try to name all of the people that helped at the Autumn Renewals for fear of missing someone, but the women of First Lutheran in Fremont and the women of St. John's in Eustis did a terrific job of preparing for the events. The First Lutheran Youth (FLYs) that helped to set tables and to do the clean up deserve our thanks in all three languages: Asante sana! Mucho gracias! Thank you! Thanks to Pr. Melody Barindel, Anne Hennigs, Chabela, Malena, Faustic and Dominica -- our speakers.

All the congregations, Julia, Karen and the students at the Lutheran Student Center in Wayne, the farmers, the senior centers, people at the windsock factory, and all the host families deserve a "standing O." Our visits will all of you were so informative and meaningful. We enjoyed every minute we spent with all of you.



Special thanks go to John Sajavec of Sid Dillon's car dealership for the generosity extended to us with the rental of the nine-passenger Suburban. It was a very comfortable ride and it was great for all of us to travel together in one vehicle. It was during our times in the car that we became better acquainted with our companion sisters and they with us.

I also want to thank Teresa Evers of MO-SAIC Village for the three-night stay at the small retreat center on the campus. What a privilege it was to attend the "Kingdom Party" with the residents! Pr. John has such a special way of leading worship for the residents, and each residents has a special way to worship. Please keep this mission in your prayers.

Last but not least, I want to thank my husband, Terry, for understanding how important it was for me to travel and be the driver on this trip. Friendships that were made and friendships that were renewed by this trip are so special to me. I thank God that I could be in the company of these Christian women for 13 days, and they will always be with me in my heart.

The most important THANK YOU goes to God for keeping us safe in our travels, for the fellowship of so many Christian people, for the yummy food, the comfy beds, and the gifts of love that we received.

THANK YOU, ALL.

# Vision Trip: Wonderful...Brings Growth

We had a wonderful Vision Trip in September. Our companion synod sisters arrived safely on Sept. 18, tired but ready to

## Companion Synods

Pearl Anderson  
24539 Park St.  
Omaha NE 68154  
402-493-6326  
[pj\\_a@cox.net](mailto:pj_a@cox.net)



see Nebraska. The weather was perfect, with warm sunny days, but just a bit cool for the ladies from Tanzania, who live in a tropical climate.

Our days were full. We visited seven big city churches, four small town churches and five rural churches. At all, we were warmly greeted and conversations were lively. We visited two pre-school daycare centers where the children learned of far away places because of our visit. We had lunch at two senior centers where the seniors asked many questions to better understand what our visitors were like. We ate at several potlucks, where the Tanzanians learned to eat many new foods and we all learned to eat some familiar foods fixed in new ways.

We visited a large cattle-feeding operation and a large farm where our sisters rode in a large combine harvesting soybeans. They now have a better understanding of our farming practices. We visited a city hall and county courthouse, and they now have a clearer understanding of the way our government works. We visited an assisted living residence and they were amazed at how strangers care for the elderly. We visited the Stuhr Museum and now they understand why quilts are important to us. They experienced a Saved to Serve opportunity, making stepping stones for the Serenity Garden at the Welcome House on the Wayne

4 - November, 2008

State campus. The tour of the campus gave them some idea of our higher education and how students finance their education.

We also managed to visit several agencies of the ELCA: The Lutheran Family Service community center where immigration issues were raised, and the family boutique in Council Bluffs to hear how they help young families. At Wayne State College the Campus Ministry students fixed us lunch. And what a privilege for us to attend a "Kingdom Party" at MOSAIC in Axtell. We sang and prayed with the residents and worshiped God together.

We learned from them at the Autumn Renewal about some problems they have at home. Both countries deal with domestic violence, alcohol abuse and poverty. Argentina has immigration issues much as we do. Tanzania has a problem with orphans whose parents die from HIV/AIDS. Like us they ask the question: How do we get the young women involved in activities of the church?

As we talked together, laughed together, traveled together and prayed together, we grew in understanding. The bonds between the women of the three synods are stronger now, and we shall continue to support each other in prayer.



*Translator Barb Becker (center) helps Chabela and Malena deal with questions at Autumn Renewal.*



## Sister - Hermana - Dada

*Barb, Malena, Beth, Faustine, Chabela, Dominica and Pearl at Eppley Airport before our guests left to return home.*

**By Barb Becker**

It was my privilege to travel for 13 days with six wonderful women whom I now consider my sisters in Christ, as well as my friends. Though our ages stretch over three decades and our homes are located on three different continents, we found our differences small in comparison with our similarities.

One of the things that most fascinated our visitors was all the quilts that we saw on our trip. My memories and impressions of this trip are like a crazy quilt: all mixed up and it is hard to know where to begin. I was able to visit parts of Nebraska that I had never seen and some I would have never imagined. Visiting a farm and a feedlot seemed logical, but I never dreamed there was a windsock factory on a farm near Spencer.

Each of the women I traveled with left me with memories. Dominica and her laugh delighted all of us. She was shy in large groups to start, but became more comfortable with time. In the car, she could talk faster

and more than anyone else. Faustine demonstrated how Tanzania women carry baskets on their heads, their babies on their backs, so they can carry more with their hands. Both of them taught us the song, "Who Am I?" in Swahili and encouraged us even when we sang it badly. We also enjoyed the song they sang when opening gifts.

Chabela has a passion for the Gospel and the poor of Argentina that was amazing and inspiring. She had been to Nebraska before, but had never ridden in a combine or seen so many cows all in one place. I was so happy to continue a friendship that began in 2006. Malena became my friend. She also has a passion for her people and her country that is inspiring. She was my walking partner and the faster we walked, the faster we talked -- my Spanish got a workout too. Of course, none of us thinks of Malena without thinking of *mate* and the fun we had in Spencer when some of the women decided they wanted

to try it.

I had traveled with Beth and Pearl in 2006, and this trip was an opportunity to grow those relationships. Pearl did a fantastic job of organizing our trip and keeping us on time. As Malena commented, when Pearl looked at her watch, we all got up and headed for the car. Beth was our chauffeur extraordinaire, powered by her morning coffee, and, again as Malena observed, if Beth didn't move, neither did the rest of us.

At each stop along the way, I was impressed over and over with the strength of women in all three synods. We are very much like the quilts that so fascinated our visitors. Each small piece by itself is a very small gift, has little strength, and offers no protection, but when all the pieces are sewn together, the gifts are multiplied, the strength is great, and protection from the cold, wind and rain is provided.

**November, 2008 - 5**

# NSWO Invests in Vision

A \$9,000 investment in Christian vision and interaction--that is what the Nebraska Synodical Women's Organization made to bring companion synod sisters here from Argentina and Tanzania.

This is the latest achievement of the NSWO Vision Fund which is constantly being built up by designated offerings from Spring Gatherings, Autumn Renewals, etc., and by gifts from units, individuals and Nebraska congregational foundations.

Because there was more than \$9,000 in the fund, we were able to invite two women from the Northern Diocese of Tanzania and two from the ILEU in Argentina to be our guests for 13 days while they spoke at Autumn Renewals and toured the state, learning more about us and we about them.

---

*Expressions* of the Nebraska Synodical Women's Organization, Women of the ELCA

*Expressions* provides information concerning programs and projects of the Churchwide and Nebraska Synodical Women's Organization, Women of the ELCA, and helps for congregational units. It is distributed free to congregational unit presidents and pastors of congregations.

The newsletter is published four times a year, in February, May, August and November. Deadline is the first of the month preceding the issue date.

Editor, Beth Bohling, 1345 North Commercial, Superior NE 68978-1023. Phone: 402-879-3494 e-mail: [beth.b@windstream.net](mailto:beth.b@windstream.net)

Send subscriptions to Nancy Johnson, 12777 A St., Omaha NE 68144. \$4 per year. Make check to NSWO.

They could not have come if we had not provided for their airline tickets and for lodging and transportation while in the state.

When we organize groups of Nebraska women to go to Tanzania and Argentina, the fund provides some help, but the women pay most of their own way. This is not possible in our sister synods.

So far, the Vision Fund has paid for two groups of visitors from abroad -- one for the convention in 2001 and the other just completed. It has also helped finance a trip for Nebraskans to Tanzania in 2004, and one to Argentina in 2006, where two women from Tanzania were invited to go along. All of these are Vision trips, building relationships between our peoples.

Please continue to support the Vision Fund with your gifts and offerings. It is amazing what we can do when we work together.

## ... Save Sept. 25-27 for Convention

(Continued from page 1)  
third straight convention.

Fourteen scholarships will be available: seven first-timers and seven women 35-and-younger, one of each per conference.

Registration forms, nominating forms and scholarship forms will be available after the first of the year and

## ... Sisters Star

(Continued from page 1)

the Autumn Renewals and more than 350 heard their presentations at churches and senior centers during the week between.

Traveling with them were Beth Meyer, NSWO president; Pearl Anderson, companion synod coordinator; and Barb Becker, translator.

The visitors included Izabel (Chabela) Bezbach and Malena Parras of Argentina and Faustine Kahwa and Dominica Masaki of Tanzania. All are leaders in Lutheran women's work in their countries.

Also speaking at the Autumn Renewals were Pr. Melody Brindell of Filley, and Anne Hennigs, of Our Savior/Lincoln.

In the East, the international guests were presented with Women of the ELCA Lucinda pins, and in the West they received the DVD "Created in the Image of God," for their respective synods.

will be mailed with the February issue of *Expressions*. Watch future issues and the website for more information as it becomes available.

If you have any questions, contact the convention team: Gwendolyn F. Edwards, chairman; Terri Durham, Arlene Johnson, Janet Schmidt, Lynn Strate.



## Hand-Painted Linens To Be Sold



*Some of the linens which Argentine women sent as a "thank you" for the NSWO helping them build a shelter.*

A cast-your-bread-upon-the-waters story has arisen out of the NSWO 2007 Convention tangible offering, part of which went to an Argentina project to build a shelter at Dios es Amor (God is Love) Church at San Martin. The members of Dios es Amor Church were so grateful for the shelter that they handpainted 25 linens and sent them with

Chabela and Malena as a "Thank you."

They specified that the linens should be sold and the money used for a project within the Nebraska Synod.

The linens were displayed at the Autumn Renewals and will be on display again at Winter Retreat and Spring Gatherings. They will be offered for sale at a silent auction at the NSWO Conven-

## NSWO To Collect Old Cell Phones

Old cell phones which will still hold a charge are being used by social agencies to give to victims of abuse or senior citizens who might need to dial 9-1-1 in an emergency. The phones can be program to dial 9-1-1 even if they are not connected to a provider

Collection boxes for such phones will be placed at Winter Retreat and at the Spring Gatherings. Phones should be donated together with their chargers.

Since cell phones contain harmful substances, donating them also helps the environment.

tion next September. What project will benefit has not yet been decided.

### Elected Board Nebraska Synodical Women of the ELCA 2007-2009

**President**  
Beth Meyer  
2061 Fairacres Dr.  
Fremont NE 68025  
402-721-3053  
tmeyer10@neb/rr.com

**Vice President**  
Gwendolynn Edwards  
3402 Castile Dr.  
Bellevue NE 68127  
GFEdwardsNSWO@aol.com

**Secretary**  
Jane Johnson  
302 North 9th Street  
Newman Grove NE 68758  
402-477-9486  
senora@cablene.com

**Treasurer**  
Nancy Johnson  
12777 A Street  
Omaha NE 68144  
402-330-8649  
nancy.johnson5@cox.net

**Board  
Representatives**  
**Central**  
Laura Hunt  
PO Box 293  
Stromsburg NE 68666  
402-764-3321  
jh30956@windstream.net

**High Plains**  
Bernice Gengenbach  
203 West Anthony St.  
Eustis NE 69028-3517  
308-486-4261  
bgbach@nebnet.net

**Metro East**  
Emily Laaker  
PO Box 107  
Bennington NE 68007  
402-238-2583  
elaaker@cox.net

**Midlands**  
Jane Flores  
466 County Road 19  
Hooper NE 68031  
402-654-2246

**Northeast**  
Becky Bahnfleth  
518 South Second St.  
Pierce NE 68767  
402-329-6316  
mdbandrjb@ptcnet.net

**Southeast**  
Carolyn Schlake  
1520 Darwin St.  
Beatrice NE 68310  
402-228-9646

**Southern Prairie**  
Teresa Christensen  
1349 N. Kansas St.  
Superior NE 68978  
402-879-4530  
tchriste@hotmail.com

# Free Programs about Global Missions

Global Mission programs are ready for your women's group or congregation. Best of all, they are FREE!

## Global Awareness

Shirley Daire  
311 James St.  
Alma NE 68920-2024  
308-928-2839  
[sdaire@yahoo.com](mailto:sdaire@yahoo.com)



Every congregation received a video entitled "Walking Together." If you haven't seen it, request another from our Synod Office (402-896-5311). This is a 22-minute look at our relationships and happenings of the Northern Diocese of Tanzania and our Nebraska Synod. Good discussion can follow and maybe some in your congregation will be interested in a closer look on one of our visits, or in working together on a project. And, of course, we always need prayer support for those involved!

Lutheran World Relief has two new videos out. They too are FREE. The first is entitled, "Justice, Dignity and PEACE."

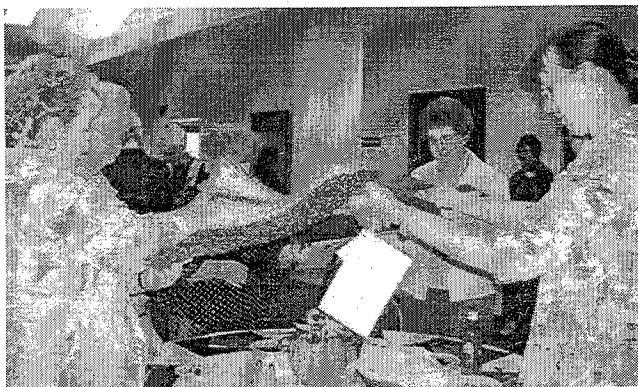
LWR staff tells about life-changing ministries -- stories that will help us be part of this valuable ministry.

The second video is entitled, "From Bean to BAR." How does fair trade chocolate come from trees in Ghana to Nebraska? We learn about the lives of farmers and how a fair price for their crop changes their families' lives.

The telephone number to order these videos is 1-800-LWR-LWR2.

Since the hot weather time is past, now is a good time to order the LWR chocolates. For more information on cost and to place an order you can go online at [lwr@lwr.org](mailto:lwr@lwr.org) or [www.equalexchange.coop/lwr](http://www.equalexchange.coop/lwr). Use your congregation's name, but your address if that is more convenient. Or telephone 1-774-776-7340.

Another new exchange product is tea bags. They come in a pyramid shape for a more flavorful brew! Don't forget coffee, too. Now is the time to plan for a Fair Trade Event in your congregation with these products as well as craft items.



*Prayer shawls made by the prayer ministry of St. John's/Eustis decorated the luncheon tables at the Western Autumn Renewal. Women raise the shawls in dedication as they add their prayers to those which the shawls absorbed as they were being knitted and crocheted.*

**8 - November, 2008**

## Spring Gathering Dates and Locations

- Feb. 28 - Metro East  
at Omaha/Luther Memorial
- March 7 - Northeast  
at Bloomfield/St. Mark
- March 14 - High Plains  
at Sidney/Holy Trinity
- March 28 - Southeast  
at Nebraska City/First
- April 4 - Southern Prairie  
at Glenvil/Immanuel
- April 18 - Central  
at St. Paul/St. Mark
- April 25 - Midlands  
at Wahoo/Bethlehem

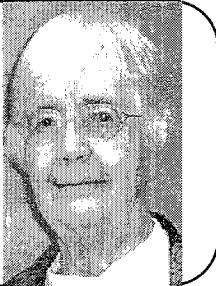


# Ways You Can Help the Prison Ministry

When Pastor William Barth spoke at Spring Gatherings, he made several suggestions as to how individuals or units can serve

## Community Action

Beth Bohling  
1345 N. Commercial  
Superior Ne 68978  
402-879-3494  
[beth.b@windstream.net](mailto:beth.b@windstream.net)



in prison ministry.

Inside the penitentiaries, he said there is need for **sewing materials**, such as needles, thread, cloth (not small scraps), patterns, elastic and quilting material. Do not contribute buttons.

At the women's penitentiary, he suggested, it might be possible to bring in **women to teach** needle point, knitting, embroidery, etc.

Both men and women in prison have expressed a need for contact with the world outside. Guidelines are available for **pen pals**.

Also, there is a need for **prayer partners**. "We know the power of prayer and so do inmates," he said.

**Worship service assistants**, such as choirs, musicians and readers are always welcome. They would have to meet guidelines.

A unit could **distribute study Bibles and other Bibles**. This must be done by mail, following guidelines.

Outside the penitentiary, Barth suggested the following ways to serve:

Corrections in Nebraska has lost its college credits program offered by Metropolitan College. There is need for **activitists** to work for some kind of college program which can be used while on the inside.

Support a college students with **funds toward continuing education** while in prison.

Become a **mentor** for a released prisoner, providing one-on-one guidance. Research has shown that support is the number one factor in preventing return to prison.

Survey your geographical area to see what is happening with state, county or local prison work. Network with existing groups.

## What are the needs of your community?

For more information, contact Pastor Barth, 402-540-8513, P.O. Box 12, Hickman NE 68372 [wbarth@diodecom.net](mailto:wbarth@diodecom.net)



*Prayer scarves for prisoners in Tanzania are dedicated at the Western Autumn Renewal in a service led by Pr. Cathy Braasch. Under leadership of Joyloraine Hughes, Hope/Smithfield made more than 370 scarves in answer to a challenge from Our Savior/Lincoln. Baskets of scarves are held by Anne Hennigs of Our Savior, and Tanzanian guests Dominica and Faustine.*

**November, 2008 - 9**

# Book Chosen for Church-Wide Study

A church-wide book discussion among Women of the ELCA readers has been planned beginning in January and running through May 2009.

The chosen book is *Radical Welcome: Embracing God, the Other, and the Spirit of Transformation* by Stephanie Spellers.

Spellers is an Episcopalian priest who has written about hospitality "Jesus style." Here are some comments from reviewers:

"Her lively and engaging book is full of practical ways, drawn from a diverse array of congregations, to make any congregation more welcoming." She points out habits, some unconscious, others deliberate, which keep the doors of a church effectively closed, contributing to a lack of spiritual hospitality.

"The book keeps the goal of welcoming people to church before readers in thoughtful ways. It is easy to read in small bites, and the reflections endure."

"Radical welcome is hard work, but it is necessary to renew and spark growth in churches which find themselves clinging to the past and are dying because of it."

This book has been chosen to help the Women of the ELCA take hold together of a vision that will help us grow and be energized and renewed at the same time.

10 - November, 2008

---

## NSWO Book Review

### *The Memory Keeper's Daughter*

The Memory Keeper's Daughter, a novel by Kim Edwards, is an interesting book to read. Even though it is not a true story, it could be.

It might spark some interesting discussion about how a family deals with the birth of a child who has a disability, about grief at the death of a child, or falsehood within a family system. There are probably many more ideas you could add. It is an interesting story!

Due to a blizzard a doctor is forced to deliver his own twins with only his nurse in attendance. One of the twins is just fine. The other has Downs syndrome. The doctor believes it would be easier and healthier for his wife if she did not have to deal with the trauma of a special needs child. He orders the nurse to take the child to a home for special children. Instead, she disappears with the infant and begins a new life loving and caring for the child.

What happens and how lives are changed and affected by the birth of the healthy son and the special needs daughter unfolds over about 25 years. I found this fascinating and the discussion in our library book club was very lively.

-- Shirley Daire

*Won't you write a few paragraphs about the next good book you read, and share it with **Expressions**, so that others can have the same pleasure you had. Email your comments to [beth.b@windstream.net](mailto:beth.b@windstream.net) or mail to Beth Bohling, 1345 N. Commercial, Superior NE 68978. Reviews for the next issue should be received by Jan. 1, 2009.*

---

See *Interchange* for more information.

Units are encouraged to name a convener/book order-taker to place orders now for the book at a discounted price.

In January, on-line opportunities for discussion will include a live chat on the

second Tuesday of each month, as well as a blog and a discussion page. Book groups within units are encouraged to have discussions either face-to-face or by e-mail.

The web site will offer a variety of downloadable, reproducible resources.

# Saved To Serve Going to Prison, Scottsbluff

Plans are being finalized for two Saved to Serve Opportunities in 2009.

One opportunity will zero in on the Nebraska Synod ELCA Prison Ministry Emphasis, learning about the ministry and interacting with prisoners. It is scheduled for July 10-12. Housing will be in a Nebraska Wesleyan University dormitory.

The group will form a choir for the Saturday Evening Worship Service which Pastor William Barth conducts at the Nebraska Penitentiary. Planners also hope the group can prepare a meal to be served after church services on Sunday to prisoners who are on a work release program. In order to participate in the worship service on Saturday evening, Saved to Serve participants will require a background check.

Tentative dates for a Saved to Serve Opportunity with Pastor William Voss and the Lakota Lutheran Center in Scottsbluff are June 12-14. It may include

dedication of the new center and chapel there. At any rate, it will feature landscaping on the center grounds and around the new building. It will also include opportunities to experience the

Lakota culture -- perhaps working with the children or attending a pow-wow.

Watch *Expressions* for additional information, including tangible offerings for the two sites.

## Don't Hide Your Light Under Basket

Are you hiding your **Light** under a basket?

No submissions were received this issue for the "**Let Your Light Shine**" column where we share with other units ideas for programs, projects and activities.

Surely somebody is doing something a little different - an idea that somebody else might like to try.

The Mission:Community committee is trying to put together a list of program resources -- people who might be willing to present a lesson for a unit, with the contact information for getting in touch with them. They haven't had any response either.

Please let us hear from you. The *Expressions* needs

**Light** ideas -- any new service projects, or ideas for social events, or growth activities. E-mail or write the editor, Beth Bohling, 1345 N. Commercial, Superior NE 68978, [beth.b@windstream.net](mailto:beth.b@windstream.net)

**And** the Mission:Community committee needs program ideas. Send them to Brenda Krueger, 2837 Hogan Cove, Fremont NE 68025 or email her at [grand\\_travelers@hotmail.com](mailto:grand_travelers@hotmail.com).

## Sample Copies

To request up to 25 copies of this issue, contact Beth Bohling, editor, at above address or phone her at 402-879-3494.

☐ New  
☐ Renewal

## Subscription Blank

Name \_\_\_\_\_

Address \_\_\_\_\_

City \_\_\_\_\_

State \_\_\_\_\_ Zip \_\_\_\_\_

(9 numbers)

Subscriptions are \$4 per year. Please make check to NSWO.

Send to  
Nancy Johnson  
12777 A Street  
Omaha NE  
68144-4060

November, 2008 - 11

# Check List for Congregational Units

## To Do Every Month

- ☐ Remind women to use their Thankoffering boxes
- ☐ Share information received from SWO and CWO
- ☐ Send offerings to synodical treasurer

## Do on Specific Months

(S applies to units whose year starts in September - J to those starting in January.)

### November

- ☐ Share *Expressions* with members
- ☐ (J) Plan yearbook
- ☐ 3-7 LWR Ingathering

## 7- World Community Day

- ☐ (J) Have you sent list of officers to Mindy Chandler, 3226 Applewood Dr., Fremont NE 68025 or e-mail to *mnchandler71@hotmail.com*

- ☐ Hold Thankoffering Services

## December

- ☐ Plan to use left-over money to do God's work
- ☐ (J) Install officers at Sunday worship
- ☐ (J) Prepare yearbooks
- ☐ Send in year's end offering
- ☐ Send news to *Expressions*
- ☐ Did you send officers to Mindy?

## January

- ☐ 1 *Expressions* deadline
- ☐ 8 Registration deadline, Winter Retreat
- ☐ 17 Winter Retreat at St. Paul/Grand Island
- ☐ Announce Spring Gather.
- ☐ Did you send in your year's end offering?
- ☐ (J) Adopt budget
- ☐ (J) Distribute yearbooks

## February

- ☐ 7 Ecumenial Legislative Briefing Day
- ☐ Publicize spring gathering
- ☐ Plan gathering offering
- ☐ Share *Expressions*

## IS YOUR ADDRESS LABEL COLORED?

If so, that is a signal that your subscription expires with this issue.

Use subscription blank on page 11 to renew

CHANGE SERVICE REQUESTED

NON-PROFIT ORG.  
US POSTAGE  
PAID  
SUPERIOR NE  
PERMIT # 6

The Nebraska Synodical Women's Organization  
of the Women of the ELCA  
1345 N. Commercial  
Superior NE 68978-1023