



# Expressions

VOL. 15, NO. 4

NOVEMBER, 2002

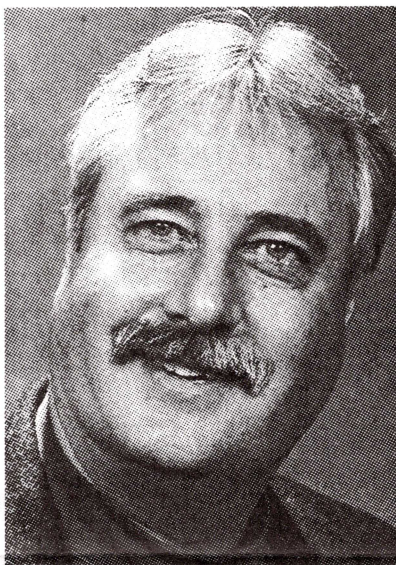
## Hardel To Lead Retreat

Expect a light-hearted but meaningful presentation from Dr. Dick Hardel, former assistant to the Nebraska Synod bishop, at Winter Retreat Saturday, Jan. 18, at St. Paul/Grand Island.

Hardel, a recognized leader and consultant in national and regional youth ministry, is executive director of the Youth and Family Institute at Augsburg College, Minneapolis.

He has also been in the clown ministry since 1973. Hardel is founder and president of Christ Clown College and a proprietor of the Life in Christ Circus. He has taken his clown ministry all over the United States and to Europe.

The retreat will focus on "Leaving a Legacy of Faith." It



**Dr. Dick Hardel**

will emphasize the unique role of women in passing on the  
(Continued on page 10)

## Nebraska Pair To Tanzania

A visit to Tanzania in early November will give Nebraska women Dora Meyer of First/Kearney and Mary Jo Huelle of Calvary/Scottsbluff an opportunity to learn about the roles and status of women in Tanzania and Ethiopia.

Sponsored by the Evangelical Lutheran Church in America and Women of the ELCA, this study tour will prepare 18 women from around the United States to speak about their experiences when they return home.

(Continued on page 4)

## Mary K. Mueller: FGH = Formula For Happier Life

The FGH method of simplifying one's life was presented by motivational speaker Mary Kay Mueller at the two Autumn Renewals. A total of nearly 400 women attended -- 75 at Lodgepole and 315 in Lincoln.

The initials stand for  
F - Forgiveness of the past  
G - Gratitude for the present  
H - Hope for the future.

"The presence of God is only encountered in the present," she said.

Mueller asked the audience to recall a wrong they had been carrying around for years, forgive the other person (and/or herself) with the help of God, and never think about it again.

She advocated the "Gratitude

(Continued on page 4)

### Inside . . .

<b>Devotions . . . . .</b>	<b>2</b>
<b>President . . . . .</b>	<b>3</b>
<b>Laughter . . . . .</b>	<b>5</b>
<b>Mission: Growth . . .</b>	<b>6</b>
<b>Comp. Synods . . . .</b>	<b>7</b>
<b>M: Community . . . .</b>	<b>8</b>
<b>Mission: Action . . .</b>	<b>9</b>
<b>Saved To Serve . . .</b>	<b>10</b>
<b>Young Women . . . .</b>	<b>11</b>

### Triennial Impressions

Between Pages 6 & 7

### Prison Ministry Receives \$4000+

Treasurer LaDene Rutt reports the following attendance and offering receipts for Autumn Renewals:

West (75)	\$1,030.00
East (315)	\$3,159.78
Mail (to Oct. 8)	\$3,870.35
<b>Total</b>	<b>\$8,060.13</b>

One-half of offering goes to Churchwide,  
one-half to the Nebraska  
Prison Ministries.



# Singles Have Gifts, Talents – and Needs

Go to college. Get married. Have kids.  
Isn't this the goal of every young woman?  
Today women are waiting longer to get mar-

## Youth Representative

**Crystal Corman**  
4325 N. 1st, Apt. 365  
Lincoln NE 68521  
402-474-9904  
[crystalcorman@hotmail.com](mailto:crystalcorman@hotmail.com)  
or [ccorman1@bigred.unl.edu](mailto:ccorman1@bigred.unl.edu)



ried. Look at pop culture. I just saw "Big Fat Greek Wedding." The main character did not get married until she was 30 years old. Monica and Chandler in "Friends" got married around the age of 30. "Bridget Jones Diary" is another example. It seems that women are focusing on their careers...or holding out for the perfect mate.

But how are these women fitting into our church communities? Are they overlooked?

Often when groups of women get together, they chat about husbands and children. Let's face it, mothers' lives revolve around their children. (I'm not speaking from experience!) This may make single women uncomfortable. They don't have these priorities. It is possible they do not desire this lifestyle. Others may feel bitter about not having this lifestyle yet.

Everyone brings a gift to God's table. How can your church tap these resources? Below are some of observations which may or may not be true for every single person.

Being single means flexibility. Single people often have more flexibility with their schedules. They decide what they will do tonight; they don't need to consult someone else. This flexibility means it is easier to change careers or locations.

"Single" does not mean lonely. Many single women hang out with groups of friends. On the other hand, singles may spend more time with their family. Or perhaps they are seeking friendship through your fellowship.

Single women may have more energy! If these women focus more on their own health, spirit

---

Crystal is available to speak to congregational units. Contact her at the above address.

---

and mind, they may be a wealth of ideas and enthusiasm. Some are seeking to dedicate energy and time to servanthood.

Some women are still looking for that perfect mate (and isn't the church the best place to look for him?). Some women prefer to focus on their careers and their personal goals. Regardless, they are our sisters in Christ. Let us welcome them with open arms.

---

## Subscription Blank

\_\_\_ New \_\_\_ Renewal

Name: \_\_\_\_\_

Address: \_\_\_\_\_

City: \_\_\_\_\_

State: \_\_\_\_\_ Zip+4 \_\_\_\_\_

Subscription: \$4 per year (4 issues). Make check payable to "Women of the ELCA."  
Please do not mail cash. Mail to:

Linda Fuhr  
1158 132nd Rd.  
Osceola NE 68651

November, 2002 - 11



# Message from the President

*God does speak-sometimes one way and sometimes another.*  
Job 33:14 NCV

God has spoken to the Women of the ELCA in several ways in the past few months.

God called us to a spirit-filled, life-changing Triennial Gathering experience, complete with fellowship with sisters from all over the world, informative and thought-provoking workshops, participatory Convention without Walls, Young Women Seeing Visions, inspirational speakers, uplifting church services for both mind and body, Advanced Leadership Training, and a very colorful and creative Unity Village. We met the new President Mary Ellen

Kiesner from Wisconsin and the new Executive Director, Linda Post Bushkofsky. More than 40 Nebraskans attended. . . . I encourage you to invite someone to talk to your group about her personal experience.

As a delegate for the first time, I was able to participate in the business of our organization. A budget of \$3,681,438 was adopted for 2003. Delegates acted on proposed amendments to the constitution and on memorials. Significant actions included:

- A vote to advocate for a "just" reauthorization of Temporary Assistance for Needy Families, the federal welfare program.
- To designate a "Day Full of Light" on a Sunday "to bring sexual exploitation of women and children into the light by focusing media attention and educating congregations about the sex industry." Women of the ELCA will distribute materials for study.
- A resolution to reduce personal, household and workplace consumption of water and other non-renewable resources by 10 percent and to study Biblical, theological and practical issues related to stewardship of water.
- An action to encourage congregational units to pray for their youth "that they may grow in faith and have healthy, safe lives."
- A vote to authorize the executive director of the Women of the ELCA to "lodge a protest in the strongest possible terms" to the U.S. government over its decision to deny Mary Laiser from Tanzania entry into the United States to attend our Gathering. Upon arrival from Amsterdam, she was sent back home by U.S. immigration officers because of a problem with her visa and passport (an error by U.S. Embassy officials). Later the problem was resolved and she returned to join her traveling companion on July 19 and to



present at the Global Mission Event.

- Election of a board that is comprised of women not only of different race and ethnic backgrounds, but also of varying ages and economic bases.

Another call was answered. . . We thank God that Mary Kay Mueller responded to our call to be the Autumn Renewal presenter. What a delightful person and very gifted! She kept us enthralled with her message through words and song, sharing personal life experiences and giving us practical and powerful ways of "Taking Care of Me."

I was determined to institute one method immediately. Each morning I have been faithful in writing down five things for which I am grateful in the last 24 hours. What a wonderful way to think about the previous day and focus on God's gifts that surround us. Of course, the challenge is not to repeat any, but it is great fun and places me in a grateful mindset for the day!

Another call has been made. . . prayerfully consider being nominated for an NSWOW office, a Board position, or as a delegate to the 2005 Triennial. Yes, I realize the NSWOW 2003 convention is one year away! But now is the time to plant the seed in the mind of someone who you think may be ready to serve the Lord in one of these capacities. You know a seed takes time to grow, and it needs to be watered and fed regularly. Be the gardener!

Your servant in Christ,

A handwritten signature in dark ink, appearing to read "Mary Ellen Kiesner".

P.O. Box 6, Davenport, NE 68335  
402-364-2142 jahoins@navix.net





**Arlene Johnson**  
P.O. Box 71  
Shelby NE 68662  
402-527-5500

## From The Veep

Hi, I'm back and pleased to serve as your Vice President again until the 2003 Convention.

I am the ultimate example of how to RECYCLE! Ha!

Greetings to all my Women of the ELCA sisters in Christ.  
Arlene

## Trip to Tanzania...

(Continued from page 1)

Traveling with the group on this two-week tour will be women from Ethiopia and Tanzania. Joining Meyer and Huelle from Nebraska's companion diocese will be Veronica Swai, Women's Work Secretary for the Northern Diocese of the Evangelical Lutheran Church in Tanzania. Swai was a guest of the Nebraska Women of the ELCA in the fall of 2001.

The study tour will include visits to development projects focusing on women, meetings with women's religious, business, and educational organizations, and many opportunities for dialogue with local women. Among the issues Meyer and Huelle will be addressing are the effects of poverty on women, the status of women in society, and the opportunities for the development of women's leadership skills.

Places of interest they are scheduled to visit include the Bagamoyo Slave Museum, historic Stone Town in Zanzibar, Morogoro ELCT Junior Seminary, Upendo Center orphanage and fish farm, and Tumani University.

## Legislative Briefing Day

Legislative Briefing Day is Saturday, Feb. 8, 2003, at Christ United Methodist Church located at 45th and A Streets in Lincoln.

Registration begins at 8 a.m. Advanced registrations are necessary for lunch. The fee of \$15 covers the meal and materials for the day.

The workings of the Nebraska unicameral and issues which it will be considering will be discussed.

Contact Donna Bathke at 7120 Eagle Drive, Lincoln NE 68507 (402-466-0521) for registration form and further information.

**4- November, 2002**



*Mary Kay Mueller insists on posing with Expressions editor Beth Bohling, whose intention was to take the speaker's picture.*

## Mary Kay Mueller...

(Continued from page 1)

Attitude." Begin each day, she advised, by thinking of five things you are thankful for from the preceding 24 hours. Never repeat.

One method, she said, is to have a Gratitude Partner with whom you exchange gratitudes each morning.

"Being grateful makes one a happier person," she said, telling how even her young son noted something different about her.

She also proposed that the audience not waste time worrying about the future. "Two of the most common ways we get stuck in the future are fear and worry," she said. "Jesus came to give us eternal life NOW."

Other quotations from her speech:

"If you act like a doormat, people tend to walk on you."

"We have to shed some old leaves to get new ones in."

"When you want something to change outside, first you have to change inside."

"If you don't choose to be happy, then your children will be miserable in the name of love."

"We can be as joyful and light as we allow ourselves to be."

"Only in God can we stop worrying."

"We are 'nice' in the name of Jesus too often."

"Anger you keep locked up inside is going to explode some day."

(more quotations on page 9)



# NSWO Plants Flower Bed for Bethphage, Axtell

A flower bed measuring 34 x 14 feet has been planted at Bethphage for the Nebraska Synodical Women's Organization by Vicky Hingst of Allen, Louise Wheeler of Osceola and Carolyn and Corissa Seivers of Holdrege.

The bed, which is right by the entryway, is a part of the Bulbs for Bethphage project which invites gardeners and environmental enthusiasts from all over to help turn the Bethphage campus into a garden wonderland.

It includes a rockbed for which Corissa is responsible.

Hingst began some time ago preparing to share her plants with Bethphage. As others heard of her efforts, they also donated plants. The garden spot includes perennials of many colors which should bloom throughout the growing season.



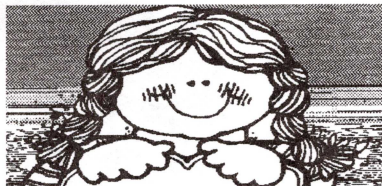
*Vicky Hingst (front, right), relatives and friends plant flower garden beside entrance to Bethphage at Axtell.*

Among these are lilacs, asters, iris, tulips, jonquils, Star of Bethlehem, ajuga, gaillardia, flowering almond, lamb's ear and coreopsis.

The Women of the ELCA from First/Allen donated money

for the tulip bulbs.

More information about Bulbs for Bethphage can be received by writing Bethphage, P.O.Box 67, Axtell NE 68924 or calling 308-743-2401. Ask for Teresa.



## God's Gift of Laughter

One Sunday in a Midwest City, a young child was acting up during the morning worship hour. Finally, the father picked the little fellow up and walked sternly up the aisle. Just before reaching the foyer, the little one called loudly to the congregation, "Pray for me! Pray for me!"

~~~

And one particular four-year-old prayed, "Forgive us our trash baskets as we forgive those who put trash in our baskets."

Another three-year-old: "Our Father, Who does art in heaven, Howard is His name. . ."

~~~

A 10-year-old was becoming quite knowledgeable about the Bible. Then one, day, she floored her grandmother by asking, "Which virgin was the mother of Jesus - the Virgin Mary or the King James Virgin?"

~~~

An ad for a church has a picture of two hands holding stone tablets on which the Ten Commandments are inscribed

and a headline that reads, "For fast, fast, fast relief, take two tablets."

~~~

A little boy was in a relative's wedding. As he was coming down the aisle, he would take two steps, stop, turn to the crowd and growl. So it went, step, step, ROAR, step, step, ROAR, all the way down the aisle. Asked later about his actions, he explained, "I was being the Ring Bear."



# Mission: Growth

"Listen. . . God is calling" was the theme of the Triennial Gathering in Philadelphia. Listen. . . What is God calling us to do? What is He calling us for? Some answers may be found in ***Faithful, yet Changing***,

a book of the changing in our times and in our church. It was written by ELCA Bishop Mark Hanson. The following

are thoughts taken from this book:

At the heart of Lutheran Worship is God's grace, heard in the Word, received in the Communion, given in the waters of Baptism. We need to keep the gospel in Word and Sacrament as our central theme. We need to talk about GRACE. When you hear the word Grace, what comes to mind?

People want to experience God rather than learn about God. On Sunday the Pastor says, "Go in peace. . . Serve the Lord." But how do we do this? Listen. . . God is calling. He call us to tell of the good news of Christ. . . to show love and to act with justice and peace to all people. We are to experience Jesus.

There is a lot of struggling in our church about ecumenical agreements and human sexuality, but the scriptures talk about justice for the poor. Bishop

the poor, to listen to the poor, to dig deeper into the causes of poverty.

Lutheran Social Services in America is the largest nonprofit provider in the U.S. Their motto is "Serving others, following the example of our Lord Jesus." Listen. . . God is calling . . . are we going to

be the example of Christ? Let's study about our changing Church. . . work for our changing Church

... PRAY FOR OUR CHANGING CHURCH.

For more information DON'T go to *www.whatever* but to ***Faithful, yet Changing*** by Bishop Mark Hanson.

***PURPOSE: To provide a variety of learning experiences that strengthen each woman as a whole person, develop her potential and equip her for ministry.***

MaryDae Eigenberg,  
Committee Chair  
1207 W. 6th Street  
Hastings NE 68901  
402-463-4605



## August Actions of the NSWO Board

- Retained the three Mission Areas as separate emphases, but intertwined. Accepted goals presented. Mission area committees are to be made up of board members and appointees.
- Accepted job descriptions for appointees.
- Made plans to host the Region IV Presidents/Vice Presidents Event at Bethphage at Axtell May 16-18, 2003. Alternate date: June 6-8.
- Adopted a document concerning ways for the president to delegate responsibilities in order to ease the burden of the office.
- Decided to convey to Churchwide the board's desire that Nebraska by a pilot SWO for the Organizational Self Assessment.

**6 - November, 2002**

## Can Order Cookbooks

A limited number of the Bread cookbooks which the NSWO prepared for Synod Assembly are still available for a suggested donation of \$10 plus \$2 shipping and handling. Checks should be made out to Women of the ELCA, but all proceeds will go to World Hunger.

Books may be ordered from Sharon Larson, P.O. Box 341, Eustis, NE 69028.





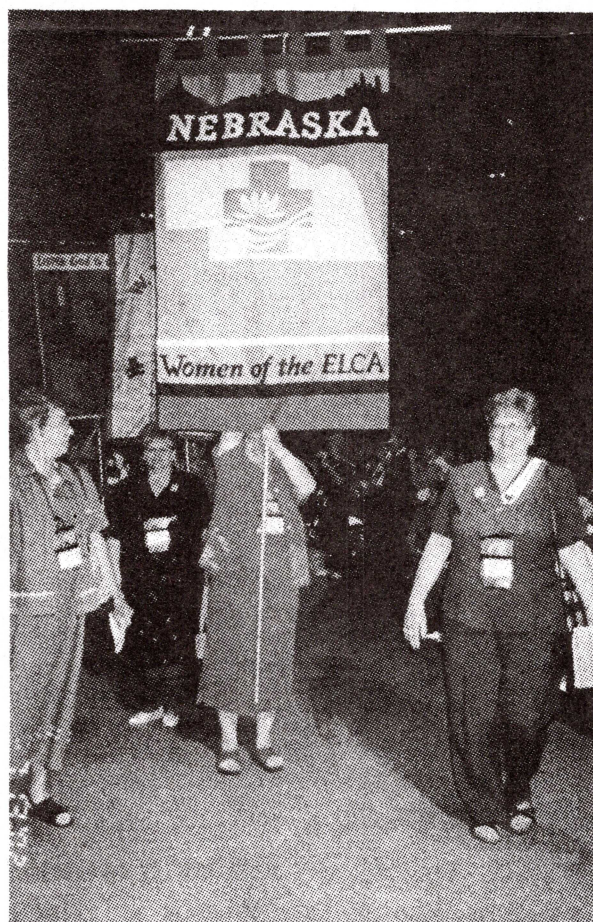
*The "delegation with a baby" poses at the Triennial Gathering in Philadelphia.*

# Triennial Impressions

## From Several Women Who Went

How privileged I feel to have taken part as a delegate in electing churchwide officers. . . We of the Nebraska Synod were so proud of Dicki Duin who headed the Committee of Reference and Counsel. She did an excellent job. . . Philadelphia is a marvelous place to visit. So much history and structures so well maintained. We only got a hint of all there is to see. . . I was pleased to

*(Right) Nebraska banner, coordinator Shirley Kehne and president Ardith Hoins in Parade of Banners.*





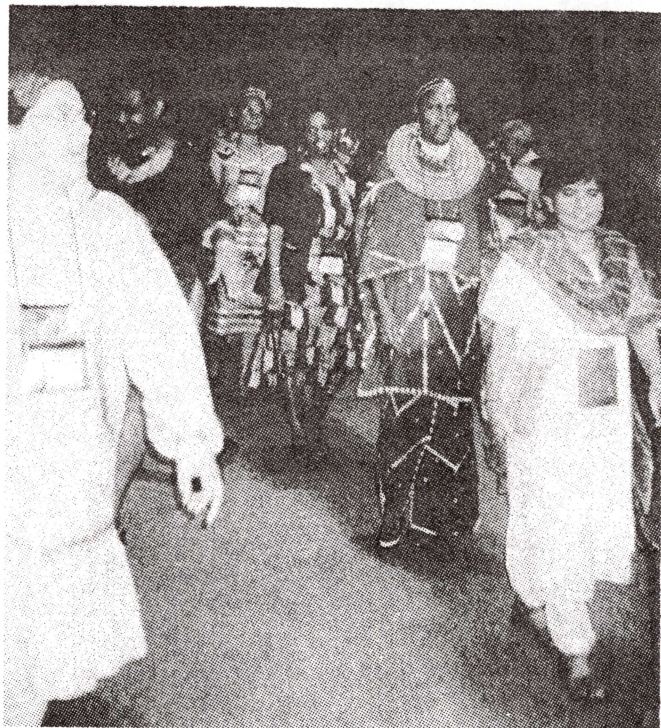
see that there were so many young women attending and they seemed to participate and enjoy themselves. . . When the young lady from the Chicago area was elected to National Board: what a thrill - I have never seen anyone so excited. . . I always enjoy the music and meeting people from various parts of our country. I chatted a bit with the group from Alaska who were there in their native dress. . . I enjoyed being a part of the decision-making process, and I highly recommend that others who have not been a delegate to either the SWO convention or the Triennial, consider do-



*ELCA Bishop Mark Hanson holds youngest visitor.*

ing so. . . During the Triennial Gathering I served as the chair to the Reference and Council Committee. I got to know many wonderful women from all over the

country. It was a very positive experience. If you are ever asked to serve on a committee for our Synod Conventions or a Triennial Gathering, I encourage you to say "Yes!" With God's help we can do great things together! . . . I particularly enjoyed being part of the delegation "with a baby" and being an adopted grandmother for Eli Werner during some of the convention. Eli was just 8 weeks old when his mother Denise brought him along to convention. You can tell from the picture that Bishop Mark Hanson enjoyed him too. . . The Bread for the Journey group was a real asset

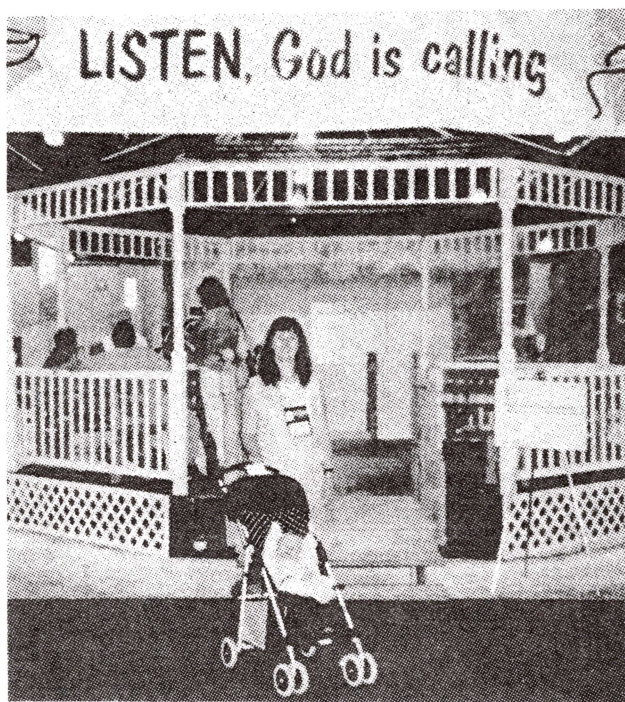


*Sister Synods appear in cultural attire for opening parade on Friday.*



*The home of Betsy Ross was one of the historical sites reached by trolley.*





*Denise Worner, delegate from Cozad with her son Eli before a gazebo in the Unity Village area.*

to the convention. They got everything going on up beat and as always were so inclusive with their music. . . The women Bishops were all incredible speakers and the international guests were fantastic. . . The opening sessions and evening worship services were worth the whole trip. . . The high points for me were the Bible

studies and the worships. The Bible studies by the three women Bishops were outstanding. . . The displays in the Unity Village were really interesting-to see what other synodicals are doing. . . I got to sing in the choir, so that was a high point too. . . The Nebraska folks tried to gather during the worship times, and it was great fun to experience the Lord with all of them. . . A big part of my trip was the joy in meeting my traveling companions ( Kandy, Lindsey, Denise and Eli) and becoming very close to them. It is a real joy to me that there is young life out there (in our synod) that on fire for Christ. . . Plenary sessions are important to me and had to be a highlight, because that is where we spent most of our time. . . The sisterhood and worship at mass gatherings was so unforgettable and spiritually rewarding. . . When I was at triennial I heard the female bishops, our women leaders of ELCA and sisters from other states give testimony that they too have experiences that make us realize we are all in the same boat. The women at triennial inspired me to want to boldly act upon our women's ministries of the ELCA. . .

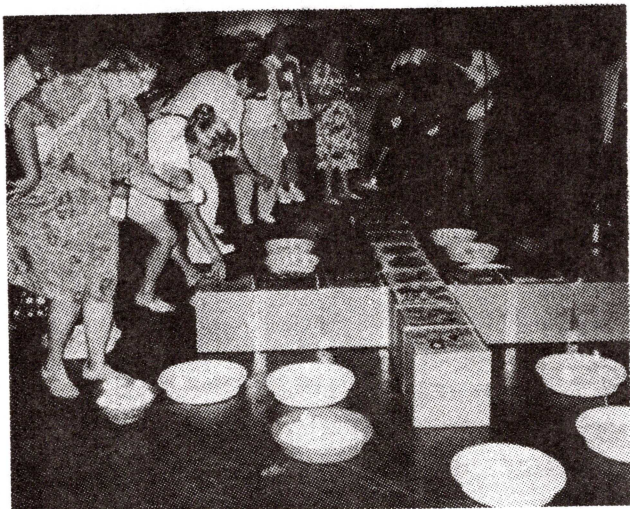


*Part of the Nebraska delegation chats after finishing their meal.*



*A guide at Independence Hall poses with three Nebraska tourists.*





*Clockwise, from top left: During a worship service, participants light candles and place them near crosses made from boxes decorated by children. Pictured with Bishop Andrea DeGroot-Nesdahl of South Dakota are Kandy Pflaster and Karen Tjarks, how a member of Churchwide staff. Marydae Eigenberg and Beth Meyer pose with Davey and Goliath. President Ardith Hoins beside the Liberty Bell -- a "must see" in Philadelphia.*

These are the women who attended the Triennial Gathering in Philadelphia as delegates from the Nebraska Synodical. They stand ready to report on their experiences at your meetings.

Mary Mayfield , 15686 Fountain Hills Drive, Omaha, NE 68118 402-778-0291

Jane Flores , 466 Country Rd 19, Hooper, NE 68031 402-654-2246

Lousie Wheeler , PO Box

733, Osceola, NE 68651-0733 402-747-6531

Sandy Smith , Box 409, Weeping Water, NE 68463 402-267-6525

Shirley Kehne , Box 106, Winnetoon, NE 68789 402-847-3261

Helen King , 4140 N. 42nd St. Omaha, NE 68111 402-453-0320

Mary Frohs , PO Box 35, Potter, NE 69156 308-879-4487

Anna Carlson , 4304 Crestline Drive, Omaha,

NE 68134-2915 402-493-4949

Denise Werner , 1800 W. 24th, Cozad, NE 69130, 308-784-4668

Dicki Duin , 353 Shamrock Rd., Gretna, NE 68028 402-332-2706

Beth Meyer , 2051 Fairacres Dr., Fremont, NE 68025-2736 402-721-3053

Ardith Hoins , P.O. Box 6, Davenport NE 68335 402-364-2142



# Argentina Sends Thanks for Offering

Our sisters in Argentina send their greetings and express their gratitude for our generosity. With some of the money sent from the Nebraska

The workshop theme for the congregation south of Buenos Aires was "The Woman and the Loneliness," based on the Samaritan Woman at the well (John chap. 4). In the province of Misiones in the north, the theme was stewardship.

With the country still facing financial crises, the people are discouraged, but in the midst of these difficulties they still have hope and continue to serve the Lord. For those who seek hope, the church is offered the opportunity to share the love of God and bring them hope.

## Companion Synods

**Pearl Anderson**  
Coordinator  
14529 Parker St.  
Omaha NE 68154  
402-493-6326



Synod the ladies were able to travel throughout the country visiting congregations to present workshops and provide study material.

They thanked us for our prayers and asked for prayers for those in need, especially the Mapuche Indians in southern Argentina.



*At the God Is Love congregation in San Martin, children receive bread and milk, as well as the hope of the Word of God.*



*The Mapuche Indians live in southern Argentina where it is very cold, with long winters. The whole congregations needs food and clothing.*

## Please Pray for:

### Tanzania

- Our sisters in Tanzania that they may continue to grow in faith.
- Girls and women studying at Angaza Women Centre.
- Pastors of the Northern Diocese, many of them women, who serve from one to 10 congregations each.
- The youth camping facility being built at Ngarony.

### Argentina

- The needy, especially the indigenous peoples.
- The government, that the leaders can find a peacefully solution to the financial crisis;
- The church, that it may continue its work;
- The women in Misiones who are trying to give new shoes to each school child;
- The unemployed, that they may find jobs in the poor economy.



# Mission: Community

I attended the Convention Without Walls session on Community Stabilization at Triennial Gathering. While Philadelphia may not be much like your community, some of the ideas being used there may be adaptable to Nebraska towns. Here are some of my notes. I hope they will be helpful to you.

Power = The ability to act.

- A. Organize People
- B. Organize Money.

Interfaith Action is a broad-based non-partisan group of people funded by dues and grants.

Strategy Team (don't call them a board of directors) meets every other month. They address issues of urban blight.

## Leadership Training

- Create a relational culture, not bureaucratic.
- Work on different issues from local neighborhood to citywide stuff.

1. One on ones
  - a. Talk and listen. What are people's issues?
  - b. Identify leaders
2. Present vision
3. Written job description for volunteers
4. Action reflection. Start doing something and you'll learn as you go along!

5. Evaluate meetings. Don't get so hung up on analysis that you don't get anything done. "Just do it!"

6. Count the YES votes. Move ahead with people who are ready to move!

7. Get media to come out and cover each action that happens.

8. We want done what needs to be done. Don't take no for an answer! Get people to see that

**8 - November, 2002**

**Board members**  
**Nina Kramer,**  
**Kandy Pflaster,**  
**Marydae Eigenberg and**  
**LaDene Rutt**  
*serve cold drinks at the Synod Assembly tailgate party.*

you are on the same page. (Teamwork approach)

9. Address real people with real issues.

10. Goal is to REBUILD Philadelphia to be a place where people can LIVE. City needs a good tax base.

## Neighborhood Transformation Initiative

**PURPOSE:** *To enable each woman to value herself and others as created in God's image and redeemed through Christ and to build up and celebrate relationships that are global, diverse and interdependent.*

Start campaign with good research. Look for allies on particular issues.

These folks visited with each councilperson in

his/her office re. the good of the city. "If you don't like our plan, where is your plan?"

Significant efforts can last 10 years or longer.

Deal with issues that you have a shot at winning.

**Ingrid Hoper,**  
 Committee Chair  
 Box 494  
 Osceola NE 68651  
 402-747-3471  
 crhoper@alltel.net





# Mission: Action

**Purpose: To enable women to articulate and act on their faith as disciples of Christ and in all areas of life.**

I have reviewed the 2002-03 Mission Action Goals that were just mailed out by the NSWO board. My thoughts are drawn particularly to Goal No. 6:

"To continue our commitment to serve others through the projects of Lutheran World Relief."

*If anyone serves me, he must follow me; and where I am, there shall my servant be also; if any one serves me, the Father will honor him. John 12:26 RSV*

This Mission:Action goal seems most appropriate for this publication in view of the Lutheran World Relief Ingathering that is scheduled Nov. 11-15, and the Lutheran World Relief Workday scheduled at

sion: Action is occurring in our state. There is clear evidence that we as a body of women are acting and articulating our faith as disciples of Christ.

Action on Goal No. 6 can occur in numerous ways. Some units have chosen to have fundraisers with proceeds designated for mission work with Lutheran World Relief, others have chosen to purchase coffees and or market goods to support third world countries. Then dozens make quilts, while others assemble

health kits - sewing kits - school kits.

Praise be to the women, for through our ministries we are moving mountains and providing relief to many other Christian women.

**Kandy Pflaster, chair**  
1009 Meridian  
Cozad NE 69130  
308-784-2193  
[tkpflast@cozadtel.net](mailto:tkpflast@cozadtel.net)



Camp Carol Joy Holling on Nov. 9. These are just a couple of widely publicized events being planned by our women's ministry here in Nebraska.

There are many women's units that have events planned that show evidence of how Mis-

## Pender Women Inspire Successful Hay Lift

From an article in the Omaha World Herald, Aug. 1, 2002:

PENDER, Neb. -- It started out as a simple \$300 donation from a church women's group to help pay for fuel to get hay to drought-stricken ranches.

The next thing you knew, about 50 people from Pender were operating hay cutting machines, driving tractors, baling, lending equipment, donating twine, making sandwiches for workers and lining up trucks. . .

About 10 semitrailer loads of hay were to be sent from Pender to the far western border of

Nebraska and points in between. The trip was organized by the Orphan Grain Train, a humanitarian organization in Norfolk. . .

A circle at St. Mark Lutheran Church inspired a community to action.

- Two businessmen donated hay from about 110 acres of hunting ground.

- Two banks donated \$250 apiece for twine.

- A local cooperative donated 400 gallons of fuel for tractors.

- Two implement dealers donated hay cutters and bal-

- Several farmers donated time and equipment.

- Trucking companies lent semis.

- Drivers made the trip without charge.

## More Mueller-isms

"God is in this moment."

"When we do not follow the whispering in our ears, the opportunity moves on."

"When you can't think of something to be grateful for, go outside."

"Jesus came to teach us how to live and love and be in joy."

**November, 2002 - 9**



## ***Saved To Serve –*** **Next Goal: Banners for UNL**

Participants at the winter Saved To Serve event will be working with sisters from the first-ever college campus unit of the Women of the ELCA, making banners for the church at the UNL Lutheran Student Center.

The campus unit was organized last year by young women attending UNL. Crystal Corman, who is the youth representative on the NSWO Board, is also unit president.

The event is scheduled for Jan. 31-Feb. 2. Joann Rohrs is project chairman, with Corman and Mary Mayfield assisting.

### **You Can Help – Even If You Can't Attend**

Items needed by the Lutheran Student Center, UNL, include 8 oz. paper (not styrofoam) cups, 9 or 10-inch paper plates and tri-fold napkins.

Ideally these should be sent with someone attending the Saved To Serve event. Or you may contact Louise Wheeler, 402-747-6531, *old wheels @ alltel.net* regarding transportation.

The student center also needs tablecloth and pots and pans. Rather than asking for units to purchase these things, the committee has decided to seek donations of money so that the students can select what they want and need.

If you want to help provide these, please contact Mary Mayfield, 15686 Fountain Hills Dr. Omaha NE 68118, 402-778-0291, *MAYFIELDIM@aol.com*.

**10- November, 2002**

The Saved To Serve committee suggests that this would be an excellent opportunity for mothers to bring their daughters, especially those nearing college age. In addition to helping with the banners, they would have an opportunity to get acquainted with college students, the Lutheran Student Center and Lincoln.

Corman is in charge of designing the seasonal banners, which will hang over the interior entrance to the church. Women who take advantage of this Saved To Serve opportunity will make the basic banners, which the college students will then embellish with appliques.

The students will lead the weekend Bible Study. They also plan to host a pot-luck dinner for participants after church on Sunday.

Registration deadline is Jan. 15. Blanks available in flyer mailed with this issue of *Expressions*. Registrants will be housed in private homes.

### **Winter Retreat...**

(Continued from page 1)

faith and the importance of the home as the primary place of faith formation.

Hardel will draw from the book, *Passing on the Faith*, which he co-authored with Dr. Merton Strommen. He will also relate stories from his book, *Blest Be the Pie That Binds*.

The day's offering will be divided among women seminarists from Nebraska

See enclosed brochure for other details. Deadline for registering is Jan. 6, 2003.

## **Units Can Serve – Model Adapts**

Couldn't your unit -- or a group of units -- do your own Saved To Serve project?

The hope of the Saved To Serve committee has always been that local units or clusters would search out needs in their communities and act to meet those needs.

All of the benefits of Saved To Serve -- working on a project, learning more about the people you serve, studying the Bible, enjoying a time of fellowship -- are transferrable to the local setting. All who have participated in a Saved To Serve event attest to what an uplifting and satisfying experience it is.

Adapt the model to fit your situation and the time frame which works best for your unit.

Contact Louise Wheeler, 402-747-6531, *old wheels @ alltel.net* for help in getting started. We are ALL -- SAVED TO SERVE!

### **Henrichs Named National Chair**

Ruth Henrichs, president and CEO of Lutheran Family Services of Nebraska, has been elected chair of the Board of Directors of Lutheran Services in America. LSA is the nation's largest network of not-for-profit health and human service organizations.

At its 2002 annual meeting, members of LSA reelected Henrichs to her second term on the board. At the next meeting, she was elected to chair the board.

Henrich has been a frequent speaker at Women of the ELCA events in Nebraska during her years with Lutheran Family Services.



# A Devotional Study

By Nina Kramer

Northeast Representative

Nebraska Synodical Women's Organization

## Thanksgiving

### Psalm 100

Make a joyful noise to the Lord, all the lands!

Serve the Lord with gladness!

Come into his presence with singing!

Know that the Lord is God!

It is he that made us and we are his;

We are his people and the sheep of his pasture.

Enter his gates with thanksgiving and his courts with praise.

Give thanks to him, bless his name!

For the Lord is good; his steadfast love endures for ever  
and his faithfulness to all generations. (NRSV)

As the year draws to a close and our thoughts turn to Thanksgiving, how are you going to give thanks? Is giving thanks something you do once a year? once a month? once a week? once an hour? continually? As joy-filled people we need to have a continuous attitude of thanks to our wonderful God.

Psalm 100 is a fantastic place to start your prayer of thanks - not only is it joy-filled and uplifting, it is full of the promise of God's love and faithfulness - what comfort, hope and joy that provides us! An unconscious attitude of joy and thanksgiving begins in a conscious attempt to cultivate this attitude. As you go through your day, thank God for all the opportunities that He presents to your life. Find joy in the small things

- whether it is a hummingbird extracting nectar from a flower in your garden, a rainbow appearing after a storm or watching a young colt frolicking in a field.

Of course, there are other Psalms that you can turn to for help in developing your attitude of praise and thanksgiving. Look at Psalms 26, 42, 50, 107, 116 and 147 - they will give a good basis for this help, which can be carried into your whole life. Next to Psalm 23, Psalm 100 is probably one of the most well-known and well-loved songs of joy, thanksgiving and comfort. Go there at any time!

GOD IS LOVE!

REJOICE and GIVE THANKS!

*PRAYER: God of all our days, we give you thanks and praise for the wonder of our lives. Be with us in all that we do for you and others and help us to develop a constant attitude of joy and thanksgiving. In Jesus' name. Amen.*

---

*Expressions of the Nebraska Synodical Women's  
Organization, Women of the ELCA*

*Expressions* provides information concerning programs and projects of the Churchwide and Nebraska Synodical Women's Organization, Women of the ELCA, and helps for congregational units. It is distributed free to congregational unit presidents and pastors of congregations.

The newsletter is published four times a year, in February, May, August and November. Deadline is the first of the month preceding the issue date.

Editor: Beth Bohling, 1345 North Commercial, Superior NE 68978-1023 Phone: 402-879-3494 e-mail: [beth.b@alltel.net](mailto:beth.b@alltel.net)

Send subscriptions to Linda Fuhr, 1158 132nd Rd, Osceola NE 68651. \$4 per year.

### Upcoming Events

**Winter Retreat**

**Jan. 18, 2003**

**St. Paul's / Grand Island**

**Saved To Serve**

**Jan. 31-Feb. 2**

**UNL Student Center**



# Check List for Congregational Units

## To Do Every Month

- ☐ Remind women to use their Thankoffering boxes
- ☐ Share information received from SWO and CWO
- ☐ Send offerings to synodical treasurer

## To Do on Specific Months

(S applies to units whose year starts in September - J to those starting in January)

### November

- ☐ Share *Expressions* with members.
- ☐ (J) Plan yearbooks
- ☐ 1 - World Community Day
- ☐ 9 - LWR Work Day at Camp Carol Joy Holling

- ☐ 11-15 LWR Pickup
- ☐ Hold Thankoffering Service
- ☐ (J) Have you sent officers list to Linda Fuhr, 1158 132nd Rd., Osceola NE 68651?

### December

- ☐ Plan to use treasury balance to do God's work
- ☐ (J) Install officers at Sunday worship
- ☐ Send in year's end offering
- ☐ Send news to *Expressions*
- ☐ Did you send officers to Linda?

### January

- ☐ 1 *Expressions* deadline
- ☐ 6 - Registration deadline for

Winter Leadership Event

- ☐ 18 - Winter Leadership Event at Grand Island
- ☐ 15 - Registration deadline for Saved To Serve
- ☐ Announce Spring Gathering

- ☐ (J) Adopt budget
- ☐ (J) Distribute yearbooks
- ☐ Jan 31-Feb.2 - Saved To Serve at UNL

### February

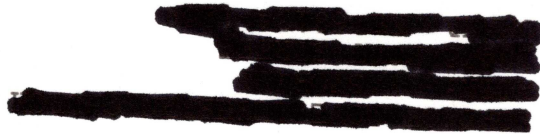
- ☐ 8 - Ecumenical Legislative Briefing Day
- ☐ Publicize spring gathering
- ☐ Plan offering for gathering
- ☐ Share *Expressions*

## CHECK YOUR LABEL

Is your address label BLUE? If so, that is a signal that your subscription expires with this issue. Use subscription blank on page 11 to renew.



6 152 29812 4



ADDRESS SERVICE REQUESTED

NON-PROFIT ORG.  
US POSTAGE  
PAID  
SUPERIOR NE  
PERMIT #6

The Nebraska Synodical Women's Organization  
of the Women of the ELCA  
1345 North Commercial Street  
Superior NE 68978-1023